



CE UK
CA

TL-W7153-PIM
Edition 2
August 2024

Cordless Impact Wrench

W7003 Series: W7153

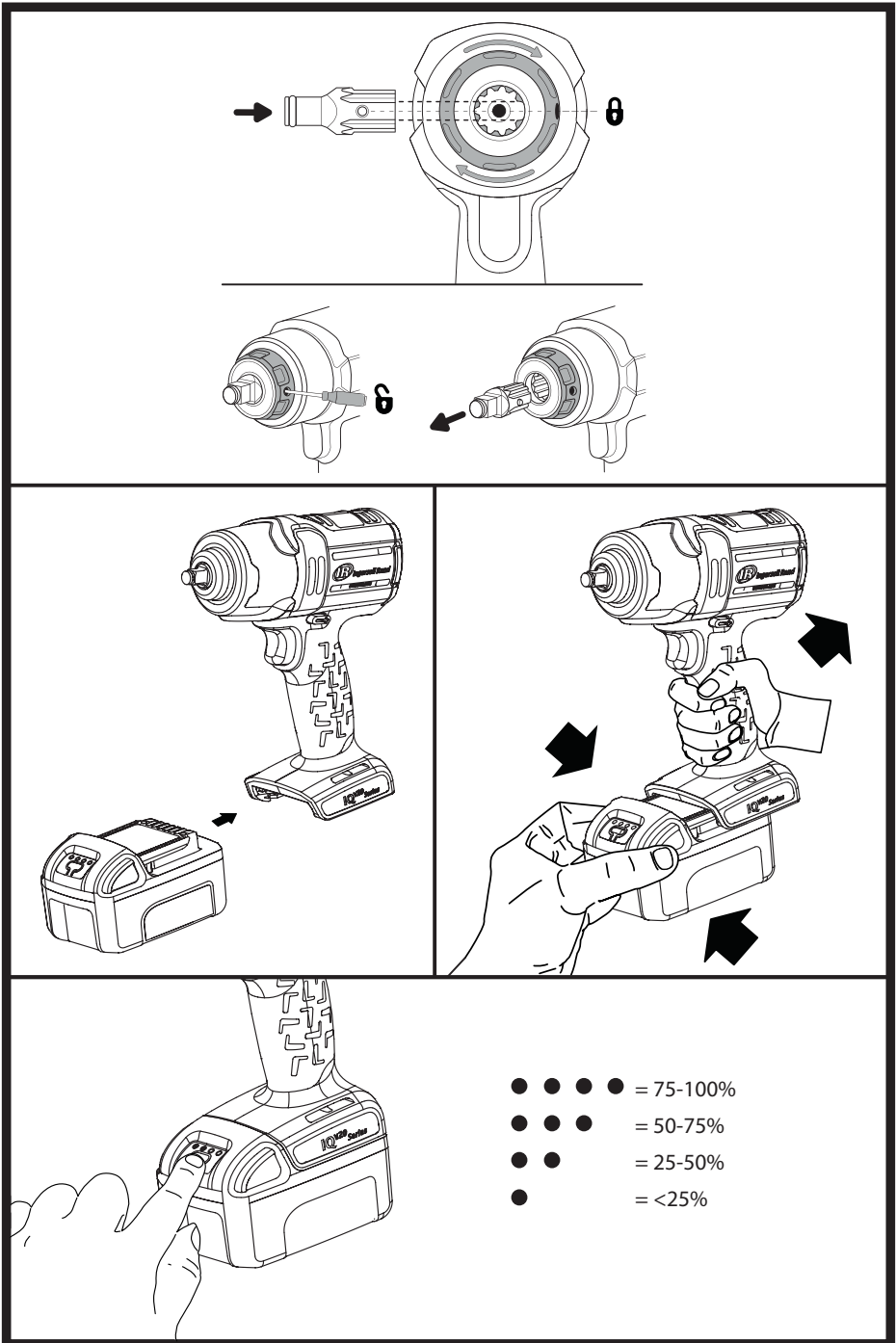
Product Information

- | | |
|---|--|
| EN Product Information | CS Specifikace výrobku |
| ES Especificaciones del producto | ET Toote spetsifikatsioon |
| FR Spécifications du produit | HU A termék jellemzői |
| IT Specifiche prodotto | LT Gaminio techniniai duomenys |
| DE Technische Produktdaten | LV Ierices specifikācijas |
| NL Productspecificaties | PL Informacje o produkcie |
| DA Produktspecifikationer | BG Информация за продукта |
| SV Produktspecifikationer | RO Informații privind produsul |
| NO Produktspesifikasjoner | TR Ürün Bilgileri |
| FI Tuote-erittely | RU Технические характеристики изделия |
| PT Especificações do Produto | ZH 产品信息 |
| EL Προδιαγραφές προϊόντος | JA 製品仕様 |
| SL Specifikacije izdelka | KO 제품 상세 |
| SK Špecifikácie produktu | HR Podaci o proizvodu |



Save These Instructions

IR Ingersoll Rand®



(Dwg. TL-W7153-PIM-1)

Product Safety Information

Intended Use: This Cordless Impact Wrench is designed to remove and install threaded fasteners.

WARNING

WARNING: Read all safety warnings, instructions, illustrations, and specifications provided with this power tool. Failure to follow the warnings and instructions may result in electric shock, fire and/or serious injury. Save all warnings and instructions for future reference.

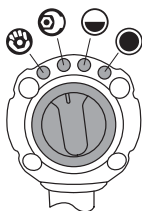
- **Responsibly recycle or dispose of batteries.** Do not puncture or burn batteries. Improper disposal may endanger the environment or cause personal injury.
- **Only use tools with appropriate voltage Ingersoll Rand batteries and charger.** Use of any other batteries may create a risk of fire, personal injury or property damage.

For additional information, refer to **Cordless Impact Wrench Safety Manual Form 04581146**, **Battery Charger Safety Information Manual Form 10567832**, and **Battery Safety Information Manual Form 10567840**.

Manuals can be downloaded from ingersollrand.com

IQV Power Control System

The intelligent control management system on this model can be adjusted with the power regulator. Select power mode by turning the dial at the back of the tool and align the notch with the desired setting. Each mode provides intelligent power control in Forward and full power in Reverse.



Mode	Name	Description
	Hand Tight	Torque-limiting, Automatic Shut-off
	Wrench Tight	
	Half Power	Torque-limiting, Continuous Run
	Max. Power	Maximum Torque, Continuous Run

WARNING

Impact wrenches are not torque wrenches. Connections requiring specific torque must be checked with a torque meter after fitting with an impact wrench. Improperly torqued fasteners may loosen and cause injury.

Product Specifications

Tool Model	Voltage	Drive		Impacts per Minute	Sound Level dB(A) (EN 62841)		Vibration (m/s ²) (EN 62841)		Battery Model
	V, DC	Type	Size	bpm	† Pressure (L _p)	‡ Power (L _w)	Level	*K	
W7153	20	Square	1/2"	2,450	95	106	17.0	3.7	BL2022

Tool Model	Intelligent Power Control			No Load Speed	Shut-off	Max. Torque ft-lb (Nm)
	Direction	Mode	Name			
W7153	Forward		Hand Tight	600	●	Refer to Figure A
			Wrench Tight	1,000	●	Refer to Figure B
			Half Power	0-1,450	-	530 (720)
			Max. Power	0-1,900		1000 (1360)
	Reverse	ALL				

† K_{PA} = 3dB measurement uncertainty

‡ K_{WA} = 3dB measurement uncertainty

* K = Vibration measurement uncertainty

Conforms to UL STD. 62841-1 and 62841-2-2.
Certified to CSA STD. C22.2 No. 62841-1 and 62841-2-2.



WARNING

Sound and vibration values were measured in compliance with internationally recognized test standards. The exposure to the user in a specific tool application may vary from these results. Therefore, on site measurements should be used to determine the hazard level in that specific application.

Figure A  Hand-tight

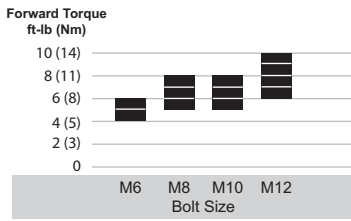
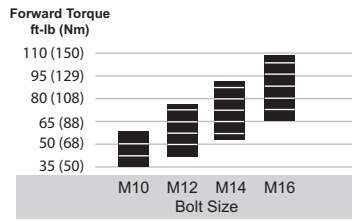


Figure B  Wrench-tight

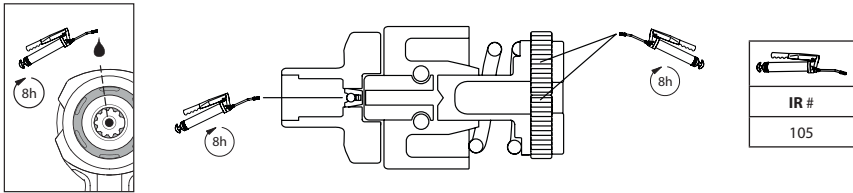


NOTICE

Torque values shown in Figures A and B are approximate. Actual torque can be effected by the application and may vary from the values shown in the graph.

Lubrication

Remove Hammer Case to apply lubrication on the gears. Apply grease evenly and sparingly. An excessive accumulation of grease will result in sluggish operation. See drawing TL-W7153-PIM-2 and table below. Maintenance frequency is shown in a circular arrow and defined as h=hours, d=days, and m=months of actual use.



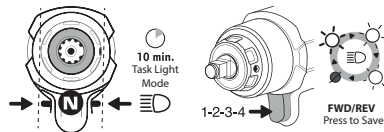
(Dwg. TL-W7153-PIM-2)

Task Light

CAUTION

- Task light is not user serviceable. Repair should only be carried out by an Ingersoll Rand Authorized Service Center. User service may result in electric shock, fire and or serious personal injury.
- Use of controls or adjustments or performance of procedures other than those specified herein may result in hazardous radiation exposure.
- The light source of this luminaire is not replaceable; when the light source reaches its end of life the whole luminaire shall be replaced.

Adjust Brightness and Flashlight Mode



1. To set task light, position directional switch to Neutral.
2. Pull trigger to cycle through brightness options or to turn OFF light.
3. Position directional switch to Forward or Reverse to save desired brightness setting and begin tool use.

NOTICE

While in Neutral, tool will remain in task light mode for 10 minutes.

(Dwg. TL-W7153-PIM-3_EN)

Parts and Maintenance

Tool repair and maintenance should only be carried out by an Authorized Service Center.

Refer all communications to the nearest Ingersoll Rand Office or Distributor.

Environmental Protection

When life of Ingersoll Rand electrical product has expired, it must be recycled in accordance with all applicable standards and regulations (local, state, country, federal, etc.). Improper disposal may endanger environment.

Symbol Identification



Return waste material for recycling.



Do not dispose of this product with household waste material.



Product contains Lithium-ion. Do not dispose of this product with household waste material.

Original instructions are in English. Other languages are a translation of the original instructions.